

## Strong Enough

♩ 90 Pop

Casey Darnell

(INTRO)

A

D

F#M

D

LOOP, ARPS, PIANO DIAMONDS



(Vs)

A

D

F#M

D

A

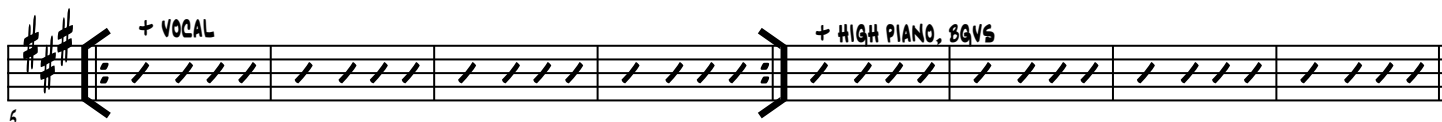
D

F#M

E

+ VOCAL

+ HIGH PIANO, BGVS



(CH)

D

A

F#M

E

FULL BAND



D

E

A

(Vs)

A

D

F#M

D

BAND DIAMOND

+ LOOP

LIGHT BAND, + ARPS



A

D

F#M

E



(CH)

D

A

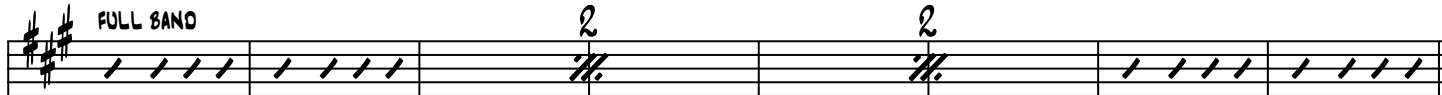
F#M

E

D

E

FULL BAND



(B2)

D

E

F#M

E/G#

A

D

E

F#M

E/G#



(Vs)

A

D

F#M

VOCAL, PIANO, LOOP

SUB DROP



2

# Strong Enough

(CH)

D A F#m E

D E

Musical notation for the Chorus (CH) section. The staff is in treble clef with a key signature of two sharps (F# and C#). The tempo/mood is marked "FULL BAND". The notation consists of six measures, each containing a whole note chord. The chords are D, A, F#m, E, D, and E. The first two measures are marked with a "51" below the staff. The last two measures are marked with a "2" above the staff.

(OUT)

A D F#m

D A

Musical notation for the Outro (OUT) section. The staff is in treble clef with a key signature of two sharps (F# and C#). The tempo/mood is marked "YOU MAKE PROMISES..". The notation consists of six measures, each containing a whole note chord. The chords are A, D, F#m, D, A, and A. The first two measures are marked with a "59" below the staff. The last two measures are marked with a "2" above the staff.